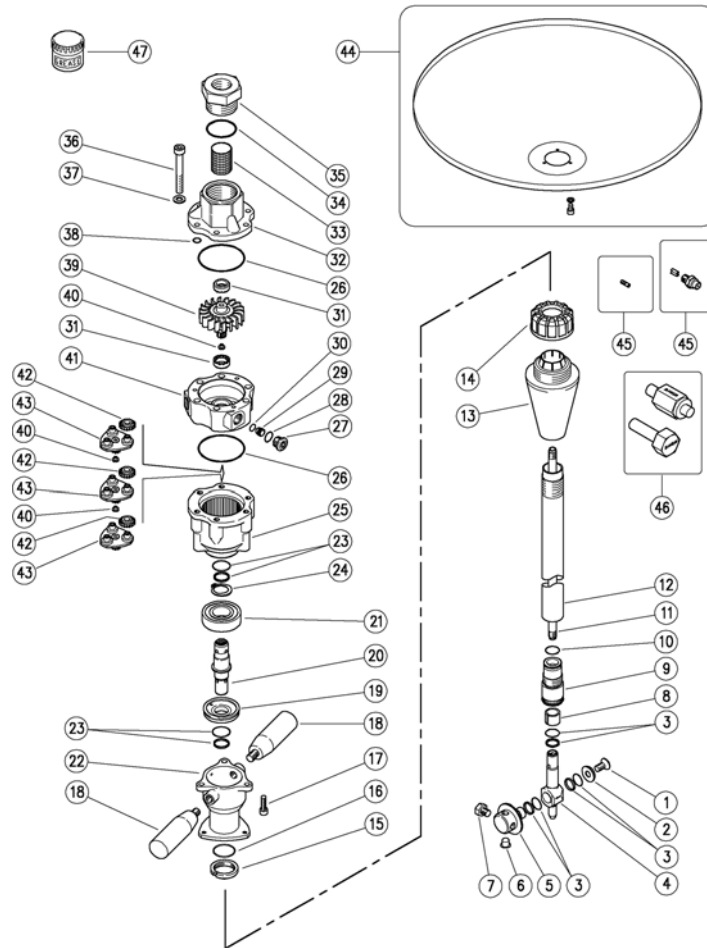


25.4600.20 MI63-50 Tank cl.,hydr.-driv.,2mm-inject.
 25.4600.24 MI63-45 Tank cl.,hydr.-driv.,2mm-inject.
 25.4600.30 MI63-50 Tank cl.,hydr.-driv.,3mm-inject.

25.4600.40 MI63-50-1/8 inject.4,00mm
 25.4600.50 MI63-50 Tank cl.,hydr.-driv.,5mm-inject.
 25.4902.25 MI63A-50 Tank cl.,hy.-driv.,2,5mm-.Atex 0575



Pos.	P/N	Description	Q.ty	K1	K2	K3	K4
1	16.1954.12	Screw, DIN7991 M8x12 mm Sst.	1				10
2	80.0015.51	C/sunk washer, 8,5x22x4,5mm Sst.	1				3
3	10.2030.00	Stem seal, 15x20x2,2 mm +O-ring	3	•			4
4	80.0005.52	Buffer, M10 Sst.	1				1
5	80.0014.51	Nzl hold. pinion, z.57, 4x1/8Npt F Sst. (1)	1				1
5	80.0016.51	Nzl hold. pinion, z.57, M4 FFFF Sst. (2)	1				1
6	15.3710.18	Plug, 1/8" Bsp plast. (1)	2				4
6	15.3704.00	Plug, M4 plast. (2)	2				4
7	15.3711.18	Grub screw, 303 Sst. 1/8M Npt (1)	2				4
7	16.1830.00	Screw, DIN912 M4x8 mm Sst. (2)	2				10
8	80.0009.85	Bushing, opn. 15x19x14,8mm PTFE	1	•			3
9	80.0027.23	Pinion.34 Sst+Bushing,opn.15mm	1				1
10	10.3184.10	O-ring, 2,62x18,72 mm Vi 70	1	•			10
11	80.0003.56	Tube, M10x1 MM 894mm Sst.	1				1
12	80.0052.56	Tube, M28x1 M 895mm Sst.	1				1
13	80.0021.84	Tapered plug, TPEs black	1		•		3
14	80.0316.84	Ring nut, PP black	1		•		10
15	80.0012.51	Ring nut, M28x1 Sst.	1				1
16	10.3205.10	O-ring, 2,62x26,64 mm Vi 70	1	•			10
17	16.1896.20	Screw, DIN912 M6x20 mm Sst.	3				10
18	13.0600.00	Knob M10x15 mm	2				2
19	80.0233.51	Spacer ring, 18x46,8x10,8mm Sst.	1				1
20	80.0232.51	Geared shaft, Sst.	1				1
21	11.4420.47	Ball-bearing, 20x47x14 mm - 2RS1 Sst.	1	•			2
22	80.0231.52	Housing sleeve, Sst.	1				1
23	10.2030.18	Stem seal, 18x23x2 mm +O-ring Epdm	2	•			5
24	10.1020.05	Snap ring, E 20 Sst.	1	•			10
25	80.0207.52	Ring gear, z.50 Sst.	1				1

** Different measures available

*** On request

Kit	P/N	Description	Q.ty
K1	25.4608.24	Spares Kit - M163 9x1pcs.	1
K2	25.4630.24	Spares Kit - M163 - M185 6x1pcs.	1
K3	80.0020.00	Tapered plug -M63	1

(1) 25.4600.20 (2) 25.4600.24 (3) 25.4600.30 (4) 25.4600.40 (5) 25.4600.50

Pos.	P/N	Description	Q.ty	K1	K2	K3	K4
26	10.3080.58	O-ring, 1,78x56,87 mm Vi 70	2	•			10
27	80.0219.51	Plug, int.hex., M14x1 Sst.	3				3
28	10.3060.10	O-ring, 1,78x12,42 mm Vi 70	3	•			10
29	80.0221.51	Injector, 2mm Sst.	3				3
29	80.0222.51	Injector, 3mm Sst. (3)	3				3
29	80.0223.51	Injector, 4mm Sst. (4)	3				3
29	80.0224.51	Injector, 5mm Sst. (5)	3				3
30	10.3003.00	O-ring, 1x8 mm	3	•			10
31	80.0212.84	Bushing, plast.	2	•			3
32	80.0201.52	Manifold, Sst.	1				1
33	28.0014.53	Net, 38mesh-400µm Sst.	1				10
34	10.3208.36	O-ring, 2,62x36,17 mm Vi 70	1	•			5
35	80.0217.51	Coupl., M40x2 M -3/4F Bsp Sst.	1				1
36	16.1955.60	Screw, DIN912 M8x60 mm Sst.	6				10
37	14.3573.00	Safet. washer, 8,4x2 mm Sst.	6				10
38	10.3109.93	O-ring, 2,4x8,3 mm Vi 70	3	•			10
39	80.0203.52	Turbine, Sst.	1				1
40	80.0213.84	Shim pin, plast.	3	•			3
41	80.0202.52	Stator, Sst.	1				1
42	80.0204.38	Planetary gear, z.19 brz	9	•			3
43	80.0205.00	Planetary gear holder+3 pins, Sst.	3				1
45	16.1363.45	Nzl, sst,1/8M Npt+guid.vane 00.045 **	2-4				10
45	25.1091.51	Nozzle, 025 - M4 Sst. pink ***	2-4				10
45	25.1190.51	Nozzle, 02 - M4 Sst. light green ***	2-4				10
45	25.1093.51	Nozzle, 035 - M4 Sst. brown ***	2-4				10
46	25.4631.24	Seal Setup Tool Kit - M163 3pcs. ***	1				1
47	14.6552.00	Teflon silicon grease x30g.>All ***	1				2