



EQUIPAGGIAMENTI
TECNICI
LAVAGGIO

TESTINE ROTANTI
MOD. A80-R2

I

GB

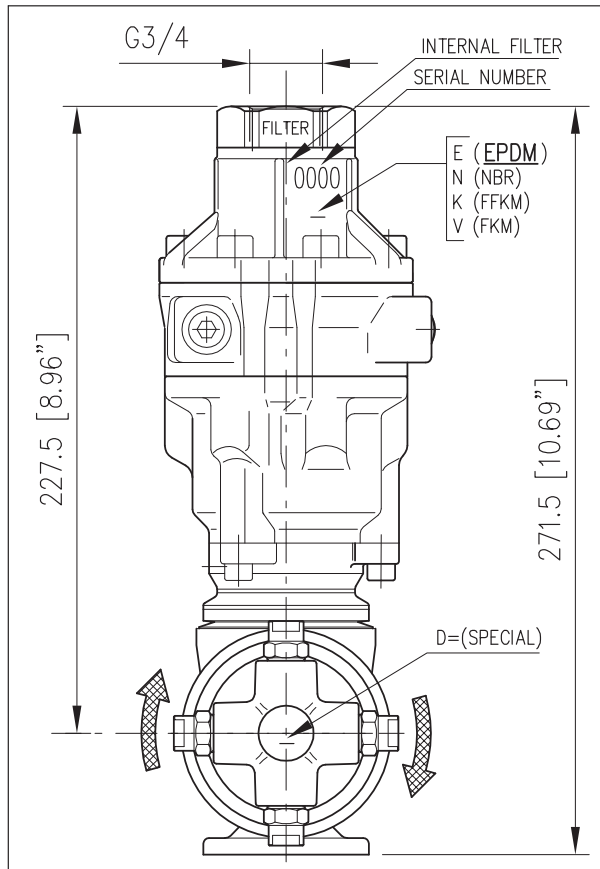
4 09

12.9409.00

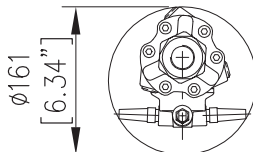
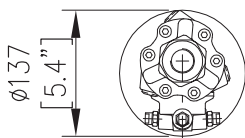
22/05/08

A80-R2

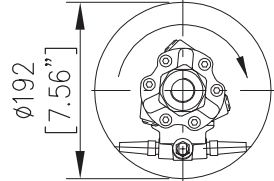
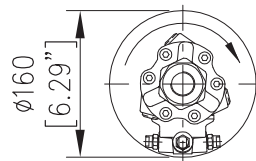
MANUALE D'ISTRUZIONE GENERAL INSTRUCTION BOOK



Foro entrata minimo
in manuale
Minimum inlet hole
for manual operation



Foro entrata minimo
in automatico
Minimum inlet hole
for automatic operation



TESTINA AUTOMOVENTE PER PULIZIA CISTERNE

- Testina volumetrica, la velocità di rotazione è proporzionale alla portata in ingresso.
- Lavaggio superfici interne di contenitori e serbatoi.
- Portata ridotta, alta pressione, elevata forza di impatto.
- Copertura orbitale completa degli interni.
- Velocità di rotazione indipendente dalla temperatura dell'acqua.
- Filtro in entrata.
- Costruzione in acciaio inox.
- Idonea per impiego settore alimentare.

ATTENZIONE !

- La Testina STANDARD è fornita di guarnizioni (DINAMICHE) in PTFE + O-Ring EPDM.
- Lubrificare esclusivamente con GRASSO SILICONICO codice: 14.6552.00
- Per l'utilizzo di liquidi detergenti, additivi chimici ecc. non compatibili con le guarnizioni standard è indispensabile contattare il nostro UFFICIO TECNICO.
- A richiesta le guarnizioni (DINAMICHE) O-RING sono disponibili anche in diverso materiale, NBR-FFKM(kalrez)-FKM(viton).
- Le guarnizioni (STATICHE) sono in FKM (viton).

SELF ROTATING CLEANING HEAD

- This is a self-propelled tank cleaning head: when the flow rate increases, the head rotates faster.
- Cleaning of interior surfaces of tanks and drums.
- Reduced flow, high pressure, high cleaning impact.
- Complete orbital coverage of all interior surfaces.
- Rotating speed independent from water temperature.
- Inlet filter.
- Stainless steel construction.
- Suitable for utilization in food industry.

ATTENTION !

- The STANDARD Tank cleaning head is supplied with seals (DYNAMIC) in PTFE + O-Ring EPDM.
- Lubricate ONLY with SILICONE GREASE P/N: 14.6552.00
- For use with Detergent liquid, Chemical additives etc that are not compatible with the standard seals, it is essential to contact our TECHNICAL OFFICE for further information.
- On request, the O-RING seals (DYNAMIC) are available in different materials such as NBR-FFKM(kalrez)-FKM(viton).
- The STATIC seals are in FKM (viton).

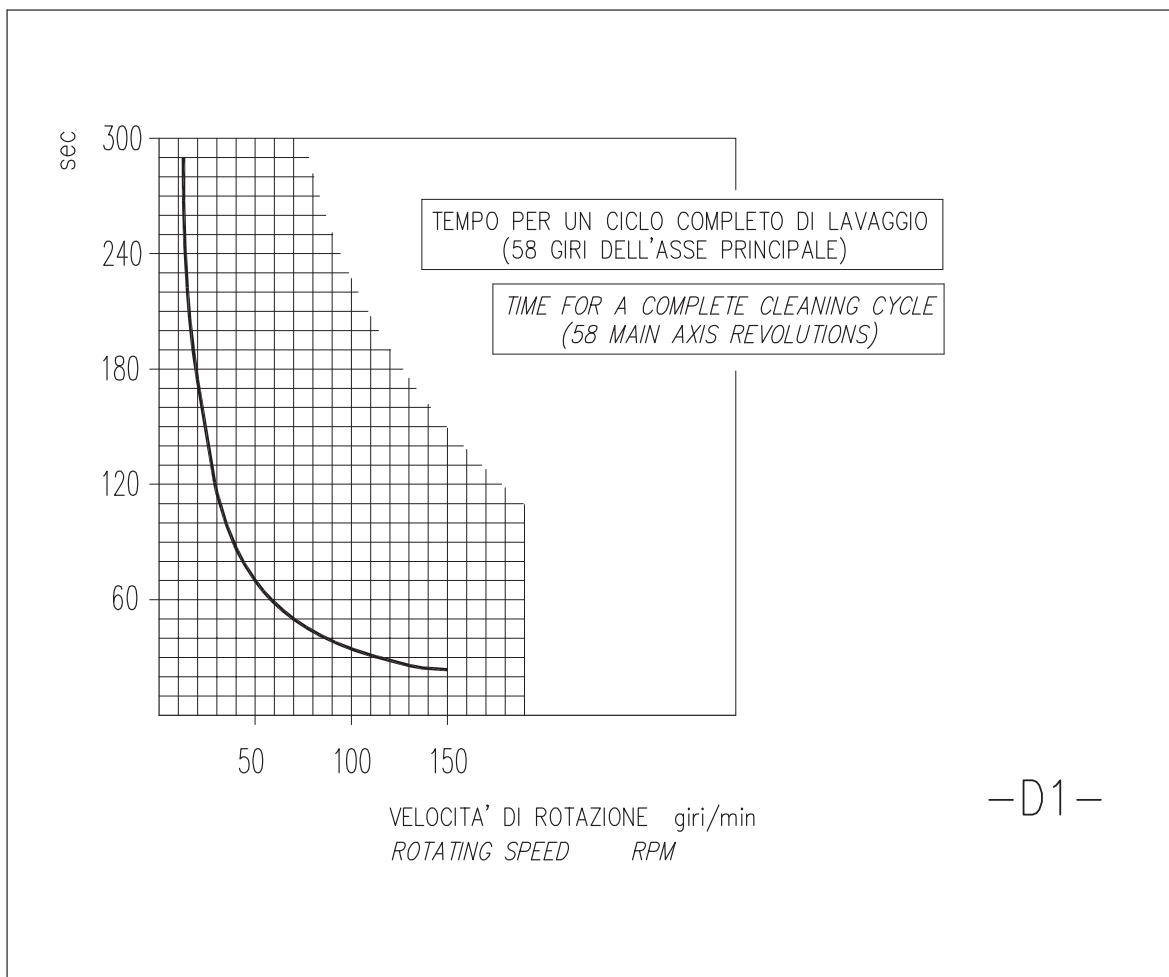
**ATTENZIONE: NON UTILIZZARE
L'APPARECCHIO PRIMA DI AVER LETTO
QUESTO MANUALE DI ISTRUZIONE**

**CAUTION: DO NOT USE THE
CLEANING HEAD BEFORE HAVING READ
THE INSTRUCTION BOOK**

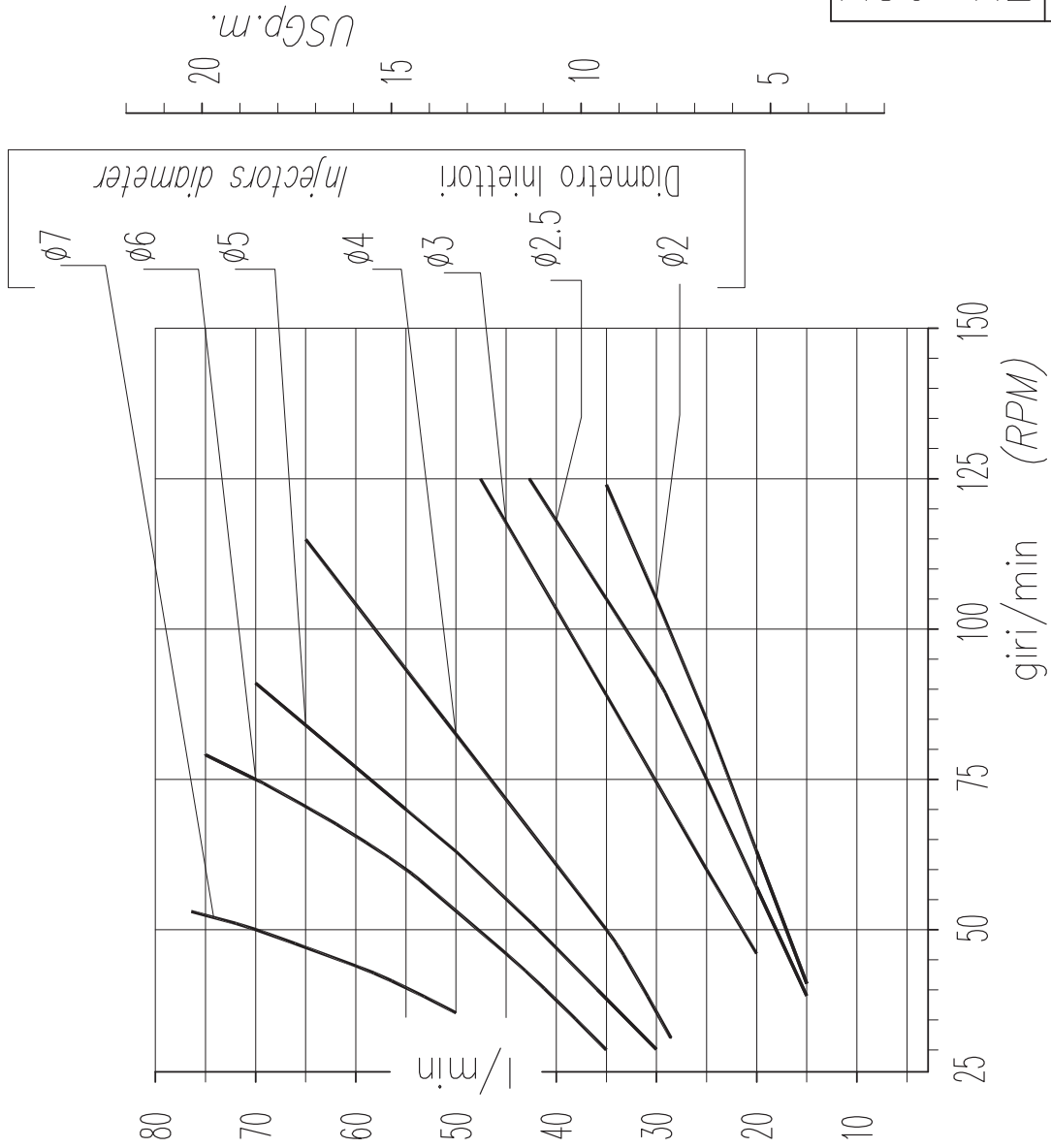
CARATTERISTICHE TECNICHE

TECHNICAL SPECIFICATIONS

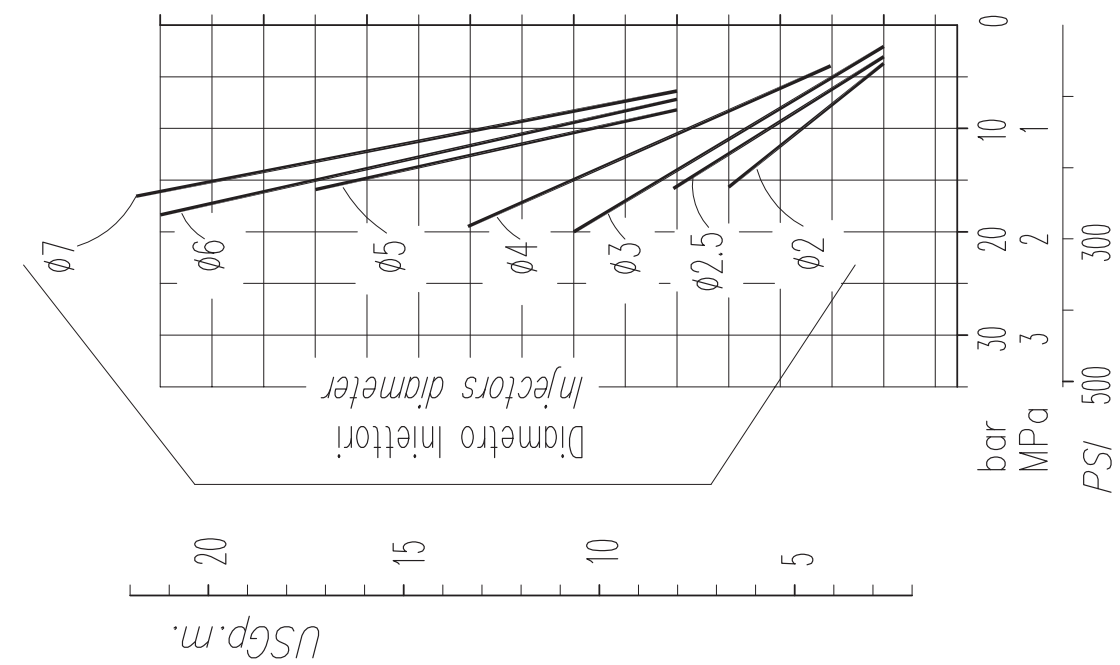
- PRESSIONE NOMINALE <i>RATED PRESSURE</i>	30÷140 bar - 3÷14 MPa (435-2000 psi)
- PRESSIONE CONSENTITA <i>PERMISSIBLE PRESSURE</i>	160 bar - 16 MPa (2300 psi)
- PORTATA MASSIMA <i>MAX FLOW RATE</i>	20 - 80 l/min (5.3-21,1 USGp.m.)
- TEMPERATURA MASSIMA ACQUA <i>MAX WORKING TEMPERATURE</i>	0-90°C (32-195°F)
- PESO <i>WEIGHT</i>	5.9 kg (208,1 oz)
- FREQUENZA ROTAZIONE ASSE PRINCIPALE <i>MAIN AXIS ROTATING SPEED</i>	60-120 giri/min (RPM)
- ATTACCO ALIMENTAZIONE ACQUA <i>INLET CONNECTION SIZE</i>	G 3/4"
- FILTRO IN INGRESSO <i>INLET FILTER</i>	550 µm
- ATTACCO UGELLI (2 o 4) <i>NOZZLES CONNECTION (2 or 4)</i>	1/4 NPT



VARIAZIONE DEI GIRI IN FUNZIONE DELLA PORTATA
RPM VARIATION IN RELATION TO FLOW

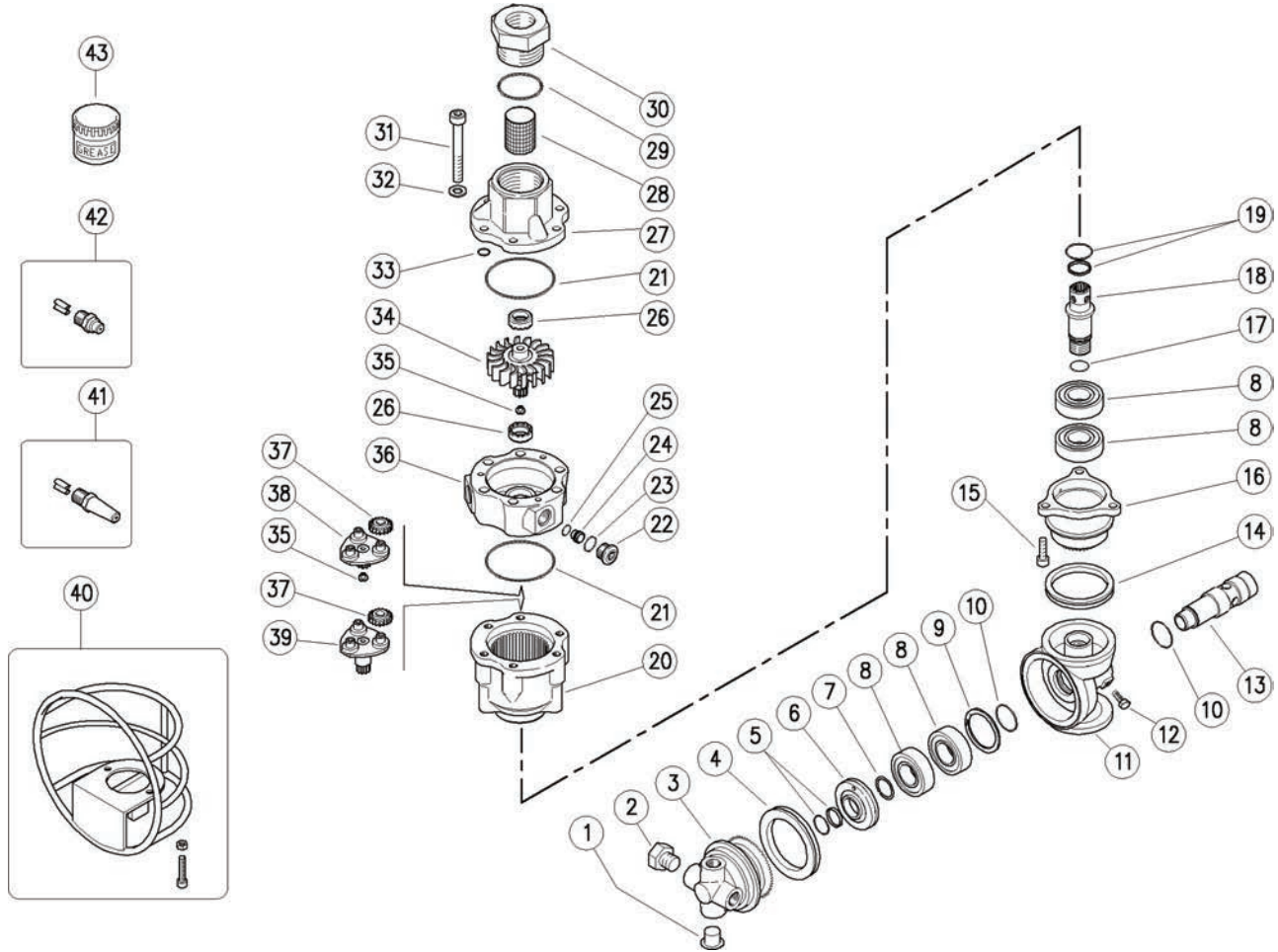


CADUTA DI PRESSIONE IN FUNZIONE DELLA PORTATA
LOSS OF PRESSURE IN RELATION TO FLOW



25.4850.25 A80-R2 Tank clean.,2-stage,2,5mm inject.
 25.4850.40 A80-R2 Tank clean.,2-stage, 4mm inject.


25.4850.70 A80-R2 Tank clean.,s/prop.,7mm inject.
 25.4850.80 A80-R2 tank cleaner, 7mm, short inj.



Pos.	P/N	Description	Q.ty	K1	K2	K3	K4	Pos.	P/N	Description	Q.ty	K1	K2	K3	K4
1	15.3720.14R	Plug, 1/4" Bsp plast.	2				4	24	80.0222.51R	Injector, 3mm Sst. **	3				3
2	15.3721.14R	Grub screw, Sst. 1/4M Npt	2				10	24	80.0223.51R	Injector, 4mm Sst. (1) **	3				3
3	80.0132.52R	Nzl hold. pinion, z.58 4x1/4Npt F Sst.	1				1	24	80.0224.51R	Injector, 5mm Sst.	3				3
4	10.2060.05R	V-ring seal, 54x5 mm	1	•			5	24	80.0225.51R	Injector, 6mm Sst. **	3				3
5	10.2030.16R	Stem seal, 16x21x2,1 mm +O-ring Epdm	1	•			5	24	80.0226.51R	Injector, 7mm Sst. (2) **	3				3
5	10.2035.16R	Seal, 16x21x2,1 mm+Or.iVit. **	1				5	24	80.0228.51R	Short injector, 7mm Sst. (3) **	3				3
5	10.2033.16R	Seal,16mm+O-ring, kalrez **	1				1	25	10.3003.00R	O-ring, 1x8 mm	3	•			10
6	80.0211.51R	Spacer ring, 16x41,8x8,8mm Sst.	1				5	26	80.0212.84R	Bushing, plast.	2	•			10
7	10.1021.00R	Snap ring, d.20 mm Sst.	1				10	27	80.0201.52R	Manifold, Sst.	1				1
8	11.4420.42R	Ball-bearing, 20x42x12 mm - 2RS1 Sst.	4	•			2	28	28.0014.53R	Net, 38mesh-400µm Sst.	1				10
9	10.1025.05R	Snap ring, l 42 Sst.	1	•			5	29	10.3208.36R	O-ring, 2,62x36,17 mm Vi 70	1	•			5
10	10.3200.10R	O-ring, 2,62x23,47 mm Vi 70	2	•			10	30	80.0217.51R	Coupl., M40x2 M -3/4F Bsp Sst.	1				1
11	80.0135.52R	Geared shaft end, Sst.	1				1	31	16.1955.60R	Screw, DIN912 M8x60 mm Sst.	6				10
12	16.1870.02R	Screw, DIN933 M5x12 mm Sst.	2				10	32	14.3573.00R	Safet. washer, 8,4x2 mm Sst.	6				10
13	80.0242.51R	Pin, 24x85mm Sst.	1				1	33	10.3109.93R	O-ring, 2,4x8,3 mm Vi 70	3	•			10
14	10.2050.05R	V-ring seal, 45x5 mm	1	•			2	34	80.0203.52R	Turbine, Sst.	1				1
15	16.1896.20R	Screw, DIN912 M6x20 mm Sst.	3				10	35	80.0213.84R	Shim pin, plast.	3	•			10
16	80.0131.52R	Pinion, z.39 Sst.	1				1	36	80.0202.52R	Stator, Sst.	1				1
17	10.3066.10R	O-ring, 1,78x15,6 mm Vi 70	1				10	37	80.0204.38R	Planetary gear, z.19 brz	6	•			9
18	80.0243.51R	Geared shaft, Sst.	1				1	38	80.0205.00R	Planetary gear holder+3 pins, Sst.	1				1
19	10.2030.18R	Stem seal, 18x23x2 mm +O-ring Epdm	1	•			5	39	80.0245.21R	Planetary gear holder+3 pins, Sst.	1				1
19	10.2035.18R	Seal, 18mm -slid.block +O-ring, vit. **	1				2	40	25.4822.00R	Protect. -A80 R -extnd nzl. **	1				1
19	10.2033.18R	Seal, 18mm -slid.block +O-ring, kalrez **	1				1	41	80.0418.23R	Xnd. nzl., sst. 07 1/4M Npt+guid.vane **	2-4				2
20	80.0207.52R	Ring gear, z.50 Sst.	1				1	41	80.0420.23R	Xnd. nzl., sst. 09 1/4M Npt+guid.vane **	2-4				2
21	10.3080.58R	O-ring, 1,78x56,87 mm Vi 70	2	•			10	41	80.0430.23R	Xnd. nzl., sst. 20 1/4M Npt +guid.vane **	2-4				2
22	80.0219.51R	Plug, int.hex., M14x1 Sst.	3				3	41	80.0440.23R	Xnd. nzl., sst. 30 1/4M Npt +guid.vane	2-4				2
23	10.3060.10R	O-ring, 1,78x12,42 mm Vi 70	3	•			10	42	16.1380.45R	Nzl, sst,1/4M Npt+guid.vane 00.045 ***	2-4				10
24	80.0221.51R	Injector, 2mm Sst. **	3				3	43	14.6552.00R	Teflon silicon grease x30g.>All **	1				2
24	80.0227.51R	Injector, 2,5mm Sst. **	3				3	43	14.6550.00R	Teflon grease x30g.>no Epdm **	1				2

** On request

*** Different measures available

Kit	P/N	Description	
K1	25.4828.24	Seals Spares Kit - A80R 10x1pcs.	1
K2	25.4852.24	Spares Kit - A80R 7x1pcs.	1

(1) 25.4850.40 (2) 25.4850.70 (3) 25.4850.80