



EQUIPAGGIAMENTI
TECNICI
LAVAGGIO

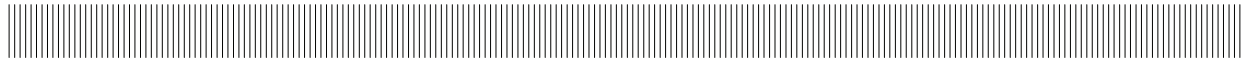
UGELLO TRIPLO
THREE WAY NOZZLE
GS3

(I)

(GB)

4

23/09/05

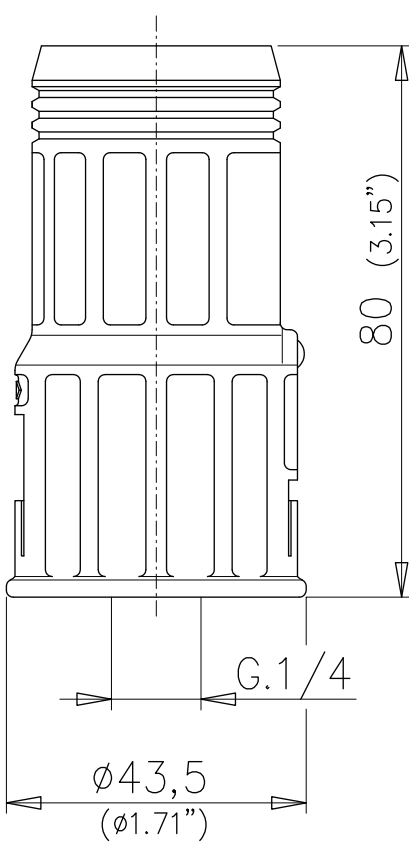


SPECIFICHE TECNICHE
SPECIFICATIONS

- PRESSIONE NOMINALE <i>RATED PRESSURE</i>	220 bar – 22 MPa (3200 psi)
- PRESSIONE CONSENTITA <i>PERMISSIBLE PRESSURE</i>	250 bar – 25 MPa (3650 psi)
- PORTATA NOMINALE <i>RATED FLOW</i>	40 l/min (10.5 USG p.m.)
- TEMPERATURA MASSIMA <i>MAX WORKING TEMPERATURE</i>	80° C (175 °F)
- UGELLO BASSA PRESSIONE <i>LOW PRESSURE NOZZLE</i>	40-20

MISURE D'INGOMBRO
OVERALL DIMENSIONS

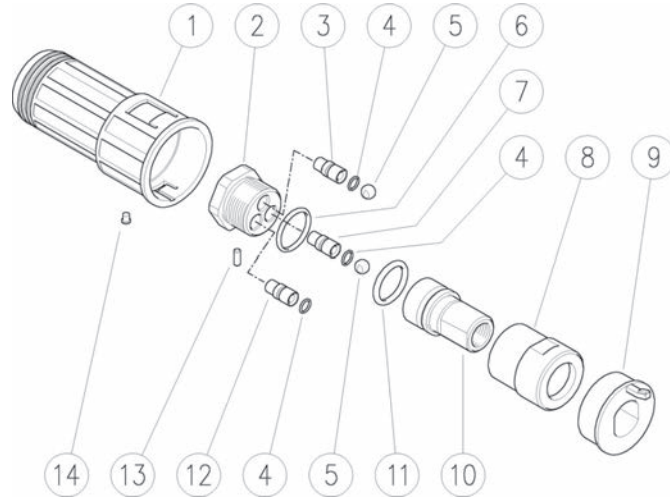
CODICE <i>CODE</i>	FATTORE DI PORTATA <i>CAPACITY SIZE</i>
25.0800.45	F.P. 045
25.0800.55	F.P. 055
25.0800.60	F.P. 06



Technical drawing of the triple nozzle showing dimensions: height 80 (3.15 inches) and diameter 43.5 (1.71 inches). The connection is G.1/4.

25.0800.45 GS3-045 N.hold.+3x nzl 1/4F Bsp
 25.0800.55 GS3-055 N.hold.+3x nzl 1/4F Bsp

25.0800.60 GS3-06 N.hold.+3x nzl 1/4F Bsp



Pos.	P/N	Description	Q.ty	K1	K2	K3	K4		Pos.	P/N	Description	Q.ty	K1	K2	K3	K4	
1	25.0808.84R	Case	1					3	8	25.0811.31R	Distributor housing	1					3
2	25.0810.31R	Nozzle holder	1					3	9	25.0809.84R	Knob plug	1					3
3	25.0804.31R	Straight nozzle, 045 (1)	1					3	10	25.0812.31R	Rotating ball distributor, 1/4F Bsp	1					1
3	25.0803.31R	Straight nozzle, 055 (2)	1					3	11	10.3181.50R	O-ring, 2,62x17,2 mm	1	•				25
3	25.0802.31R	Straight nozzle, 06 (3)	1					3	12	25.0807.51R	Nozzle, 25° 045 d.7 mm brass (1)	1					3
4	10.3002.01R	O-ring, 1x5 mm Ni 85	3	•				10	12	25.0806.51R	Nozzle, 25° 055 d.7 mm brass (2)	1					3
5	14.7421.50R	Ball, 1/4" Sst.	2	•				10	12	25.0805.51R	Nozzle, 25° 060 d.7 mm brass (3)	1					3
6	10.3072.50R	O-ring, 1,78x21,95 mm	1	•				10	13	15.1018.00R	Parallel pin, 3x8 mm Sst.	1					10
7	25.0801.31R	Nozzle, 40° 20 d.7 mm brass	1					3	14	15.2000.45R	Stud, 045 blue (1)	1					10

Kit	P/N	Description	
K1	25.0815.24	Spares kit -GS3 1x4pcs.	1

(1) 25.0800.45 (2) 25.0800.55 (3) 25.0800.60