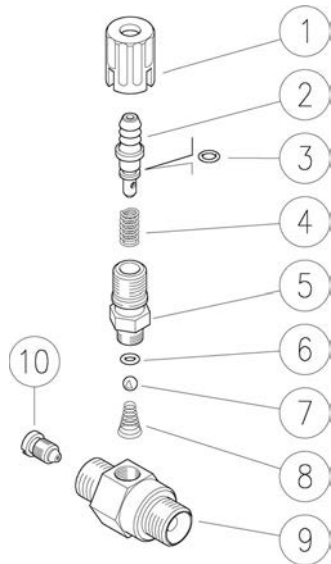


21.0150.15 Injector, adjustable 3/8MM Bsp 1,5mm nzl

21.0150.18 Injector, adjustable, 3/8MM Bsp 1,8mm nzl



21.0150.21 Injector, adjustable 3/8MM Bsp 2,1mm nzl

21.0150.23 Injector, adjustable 3/8MM Bsp 2,3mm nzl

Pos.	P/N	Description	Q.ty	K1	K2	K3	K4	
1	21.0171.84R	Inject.knob, 1/4F Bsp black	1		•			10
2	21.0155.99R	Hose barb, d.8 mm brass+o-ring	1		•			5
3	10.3043.01R	O-ring, 1,78x4,48 mm Vi 70	1	•				10
4	21.0158.51R	Spring, 0,8x7x15 mm Sst.	1		•			10
5	21.0173.31R	Coupling, M12x1-1/4M Bsp brass	1		•			10
6	10.3049.00R	O-ring, 1,78x5,28 mm Vi 70	1	•				10
7	14.7420.01R	Ball, 7/32" Sst. Aisi 316	1	•				10
8	21.0160.51R	Tapered spring, Sst. -inject.	1	•				10
9	21.0159.31R	Inject.housing, 3/8MM Bsp brass	1					5
10	21.0007.51R	Nozzle, M8x1 - 1,5 mm Sst.	1					10
10	21.0002.51R	Nozzle, M8x1 - 1,8 mm Sst. (1)	1					10
10	21.0004.51R	Nozzle, M8x1 - 2,1 mm Sst. (2)	1					10
10	21.0157.51R	Nozzle, M8x1 - 2,3 mm Sst. (3)	1					10

Kit	P/N	Description	Q.ty
K1	21.0152.24	Spares kit -adjust.inject. 4x1 pcs(7/32")	1
K2	21.0100.00R	Regul.+h.barb 8-M12mm brs. inje.	50

(1) 21.0150.18 (2) 21.0150.21 (3) 21.0150.23