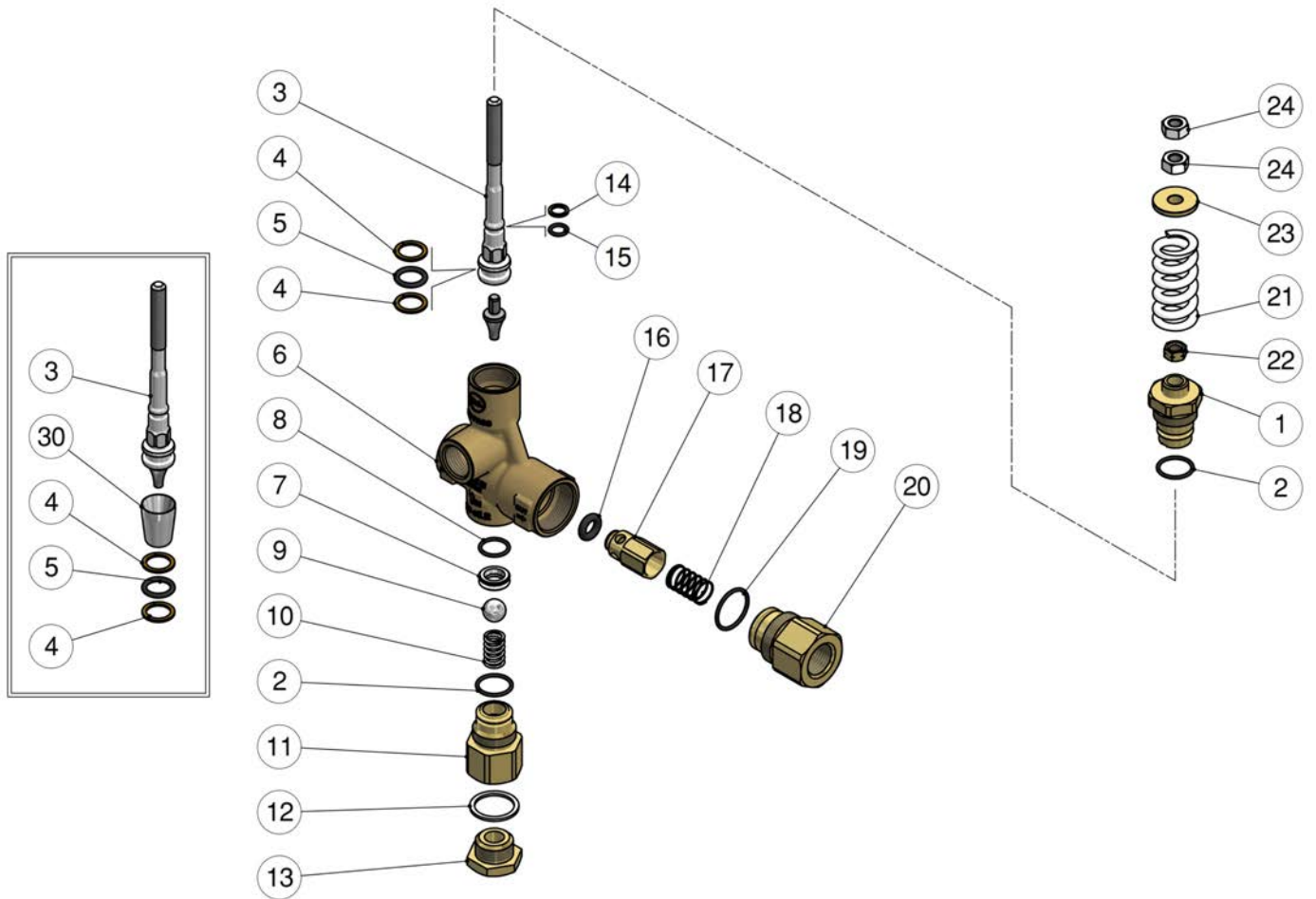


60.0423.00 VB 85Rv/180 unload. 1/2F Bsp
 60.0423.04 VB85/180 unload.1/2F Bsp +gaug.port 1/4
 60.0423.05 VB85 Rv/180 unload. 1/2F Npt

60.0423.60 VB85 Rv/310 unload. 1/2F Bsp
 60.0423.65 VB85 Rv/310 unload. 1/2F Npt F



Pos.	P/N	Description	Q.ty	K1	K2	K3	K4	
1	60.0491.31R	Piston holder, brass	1					3
2	10.3068.01R	O-ring, 1,78x17,17 mm Ni 85	2	•				10
3	60.0416.21R	Valve piston, Sst.-VB85R-Rv	1					5
4	10.4014.00R	Back-up ring, opn. 18x13,5x1,2 mm	2	•				10
5	10.3178.00R	O-ring, 2,62x13,1 mm	1	•				10
6	60.0486.35R	Housing -VB85, 1/2F Bsp brass	1					3
6	60.0497.35R	Housing -VB85, 1/2F Npt brass (1,2)	1					3
6	60.0495.35R	Housing -VB85, 1/2F+1/4 Bsp brass (3)	1					1
7	60.2803.51R	Sst seat, 10 mm	1	•				5
8	10.3064.01R	O-ring, 1,78x14 mm Ni 85	1	•				10
9	14.7465.00R	Ball, 1/2" Sst.	1	•				5
10	30.5304.51R	Spring, 2x29x9,9 mm Sst.	1					10
11	60.0441.31R	Suction coupl., 1/2F Bsp brass	1					3
11	60.0496.31R	Suction coupl., 1/2F Npt brass (1,2)	1					5
12	14.4290.00R	Washer, 22x27x1,5 mm alu. (4,5)	1					10
13	60.0444.31R	Grub screw, brass 1/2 Npt (1,2)	1					10

Pos.	P/N	Description	Q.ty	K1	K2	K3	K4	
13	60.0413.31R	Plug,brass 1/2 Bsp, hex.27 (4,5)	1					10
14	10.4008.00R	Back-up ring, opn. 8x11x1,2 mm	1	•				10
15	10.3055.00R	O-ring, 1,78x7,66 mm	1	•				10
16	10.3292.00R	O-ring, 4x8 mm	1	•				10
17	60.0488.99R	Shutter pin, brass+or 4x8 mm	1					10
18	60.0489.51R	Spring, 0,8x13,3x27 mm Sst.	1					5
19	10.3072.60R	O-ring, 1,78x21,95 mm Ni 85	1	•				10
20	60.2809.31R	Shutter coupl., 1/2F Bsp brass	1					3
20	60.1852.31R	Shutter coupl., 1/2F Npt brass (1,2)	1					3
21	60.0012.61R	Spring, 5x25x50 mm white (4,1)	1					5
21	60.0033.61R	Spring, 5,7x26x53 mm blue (5,2)	1					5
22	11.4576.31R	Hex. nut, M8, brass	1					10
23	60.0011.31R	Spring holder ring, brass	1					10
24	11.4574.00R	Hex. nut, M8	2					10
30	10.4407.00R	Seal frame ->VB60-80 zero **	1					1

** On request

Kit	P/N	Description	
K1	60.0468.24	Spares kit -VB85R-Rv, 10x1pcs.	1

(1) 60.0423.05 (2) 60.0423.65 (3) 60.0423.04 (4) 60.0423.00 (5) 60.0423.60