


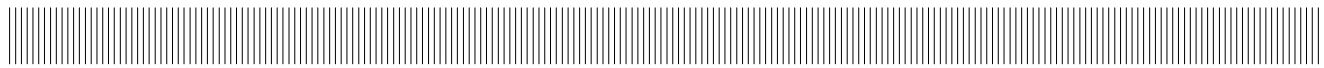


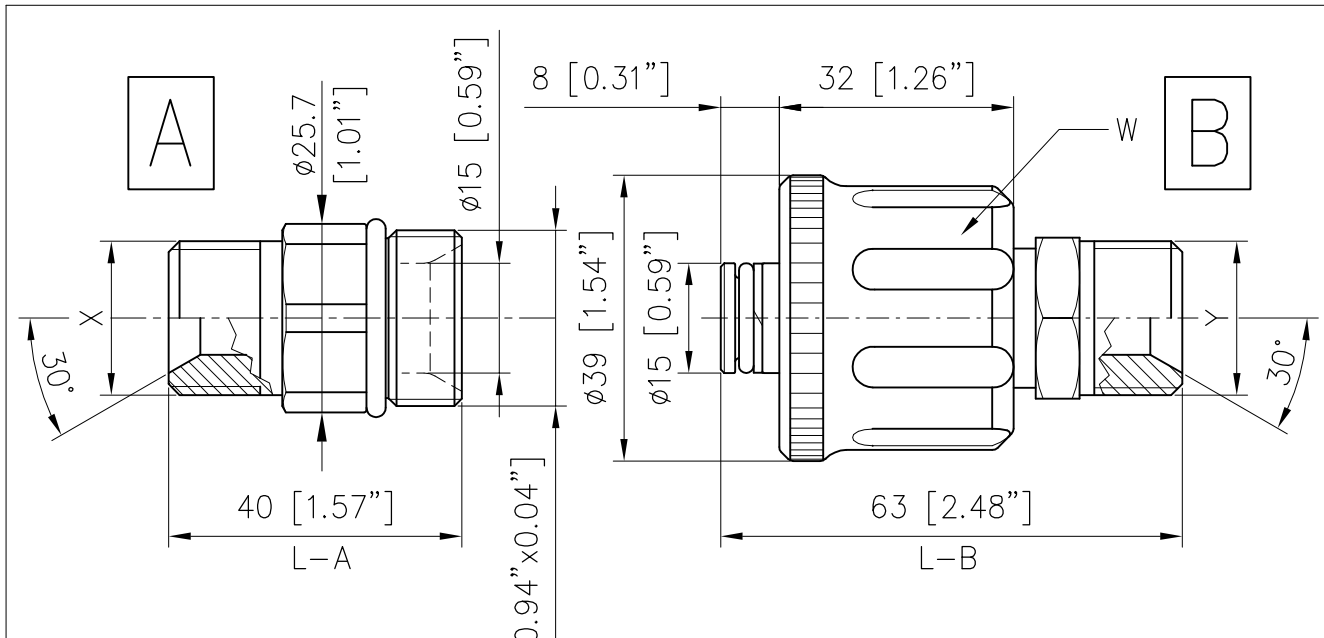
| | | | | |
|---|--|---|---|---|
|  | E QUIPAGGIAMENTI T ECNICI L AVAGGIO | AR9 ATTACCO PROLUNGATO 2 O-RING - M24 - D.15 mm. AR9 EXTENDET QUICK COUPLING 2 O-RING - M24 - D.0.59 in. |  |  |
| | | | 02/09/08 | |



CARATTERISTICHE TECNICHE
SPECIFICATIONS

| | |
|--|---|
| - PRESSIONE NOMINALE RATED PRESSURE | 600 bar - 60 MPa (8700 psi) |
| - PRESSIONE CONSENTITA PERMISSIBLE PRESSURE | 660 bar - 66 MPa (9500 psi) |
| - PORTATA MASSIMA MAX FLOW RATE | 80 l/min (21 USG p.m.) |
| - TEMPERATURA MASSIMA MAX WORKING TEMPERATURE | 160° C (320°F) |
| - MATERIALE MATERIAL | CORPO E NIPPOLO IN ACCIAIO INOX CON MANOPOLA IN PLASTICA ANTIURTO E GUARNIZIONI OR IN NBR. STAINLESS STEEL BODY AND NIPPLE WITH SHOCKPROOF PLASTIC HANDLE AND NBR O RINGS. |

MISURE D'INGOMBRO
OVERALL DIMENSIONS

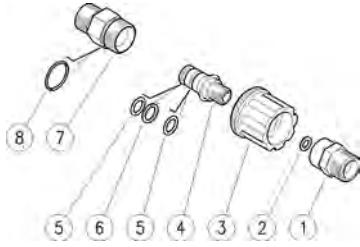


| A | X | L-A |
|-------------|--------------|-----|
| CODICE CODE | | |
| 26.0940.40 | G 3/8 F | 40 |
| 26.0940.50 | G 3/8 M | 40 |
| 26.0940.70 | G 1/2 M | 40 |
| 26.0940.46 | G 3/8 F+74°F | 45 |
| 26.0940.80 | M24x1,5-Ø15 | 45 |

| B | Y | W | L-B |
|-------------|--------------|------------|-----|
| CODICE CODE | | | |
| 26.0950.40 | G 3/8 F | ROSSO RED | 63 |
| 26.0950.50 | G 3/8 M | ROSSO RED | 63 |
| 26.0950.70 | G 1/2 M | ROSSO RED | 63 |
| 26.0950.49 | G 3/8 F+74°F | NERO BLACK | 69 |
| 26.0950.59 | G 3/8 M | NERO BLACK | 63 |

26.0940.40 AR9 A M24 15mm nipplo ghiera,inox-G3/8F
 26.0940.50 AR9 A M24 15mm nipplo ghiera,inox-G3/8M
 26.0940.70 AR9 A M24 15mm nipplo ghiera,inox-G1/2M
 26.0950.30 AR9 B M24-3pz 15mm att.rap.gh.,inox-G1/4

26.0950.40 AR9 B M24,3pz 15mm att.rap.gh.,inox-3/8F
 26.0950.50 AR9 B M24-3pz 15mm att.rap.gh.,inox-G3/8M
 26.0950.70 AR9 B M24,3pz 15mm att.rap.gh.,inox-1/2M

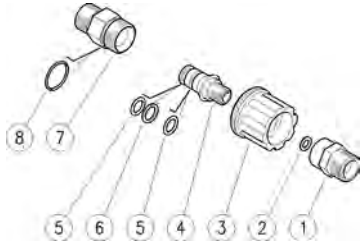


| Pos. | Codice | Descrizione | Q.tà | K1 | K2 | K3 | K4 | |
|------|------------|---|------|----|----|----|----|----|
| 1 | 26.0956.51 | Riduz.in.M16x1F -G1/4M (1) | 1 | | | | | 2 |
| 1 | 26.0953.51 | Riduz.inox M16x1F Ermeto G1/2M (2) | 1 | | | | | 2 |
| 1 | 26.0954.51 | Riduz.inox M16x1F -G3/8F (3) | 1 | | | | | 2 |
| 1 | 26.0955.51 | Riduz.in.M16x1F -G3/8M (4) | 1 | | | | | 2 |
| 2 | 14.3713.00 | Rosetta 9x13x1,5 mm Cu | 1 | | | | | 10 |
| 3 | 26.0951.22 | Girello AR9 M24x1,5-17,5mm rosso | 1 | | | | | 3 |
| 4 | 26.0952.51 | Spinotto 15mm-M16x1 inox | 1 | | | | | 1 |
| 5 | 10.3110.10 | An.OR 2,4x10,3 mm Ni 85 | 2 | | | | | 10 |
| 6 | 10.4011.01 | An. anties. 11,2x14,9x1,2 mm | 1 | | | | | 10 |
| 7 | 26.0940.40 | AR9 A M24 15mm nipplo ghiera,inox-G3/8F (5) | 1 | | | | | 10 |
| 7 | 26.0940.50 | AR9 A M24 15mm nipplo ghiera,inox-G3/8M (6) | 1 | | | | | 10 |
| 7 | 26.0940.70 | AR9 A M24 15mm nipplo ghiera,inox-G1/2M (7) | 1 | | | | | 10 |
| 8 | 10.3185.00 | An.OR 2,5x20 mm | 1 | | | | | 10 |

(1) 26.0950.30 (2) 26.0950.70 (3) 26.0950.40 (4) 26.0950.50 (5) 26.0940.40
 (6) 26.0940.50 (7) 26.0940.70

26.0940.40 AR9 A M24 15mm screw.nipl.,sst-3/8F Bsp
 26.0940.50 AR9 A M24 15mm screw.nipl.,sst-3/8M Bsp
 26.0940.70 AR9 A M24 15mm screw.nipl.,sst-1/2M Bsp
 26.0950.30 AR9 B M24-3pcs 15mm scr.cpl,sst-1/4M Bsp

26.0950.40 AR9 B M24,3pcs 15mm scr.cpl,sst-3/8F Bsp
 26.0950.50 AR9 B M24-3pcs 15mm scr.cpl,sst-3/8M Bsp
 26.0950.70 AR9 B M24,3pcs 15mm scr.cpl,sst-1/2M Bsp



| Pos. | P/N | Description | Q.ty | K1 | K2 | K3 | K4 | |
|------|------------|---|------|----|----|----|----|----|
| 1 | 26.0956.51 | Reduct.sst M16x1F -1/4M Bsp (1) | 1 | | | | | 2 |
| 1 | 26.0953.51 | Reduct.sst M16x1F Ermeto 1/2 Bsp M (2) | 1 | | | | | 2 |
| 1 | 26.0954.51 | Reduct.sst M16x1F -3/8F Bsp (3) | 1 | | | | | 2 |
| 1 | 26.0955.51 | Reduct.sst M16x1F -3/8M Bsp (4) | 1 | | | | | 2 |
| 2 | 14.3713.00 | Washer, 9x13x1,5 mm Cu | 1 | | | | | 10 |
| 3 | 26.0951.22 | Hand nut -AR9, M24x1,5-17,5mm red | 1 | | | | | 3 |
| 4 | 26.0952.51 | Plug, 15mm-M16x1 Sst. | 1 | | | | | 1 |
| 5 | 10.3110.10 | O-ring, 2,4x10,3 mm Ni 85 | 2 | | | | | 10 |
| 6 | 10.4011.01 | Back-up ring, 11,2x14,9x1,2 mm | 1 | | | | | 10 |
| 7 | 26.0940.40 | AR9 A M24 15mm screw.nipl.,sst-3/8F Bsp (5) | 1 | | | | | 10 |
| 7 | 26.0940.50 | AR9 A M24 15mm screw.nipl.,sst-3/8M Bsp (6) | 1 | | | | | 10 |
| 7 | 26.0940.70 | AR9 A M24 15mm screw.nipl.,sst-1/2M Bsp (7) | 1 | | | | | 10 |
| 8 | 10.3185.00 | O-ring, 2,5x20 mm | 1 | | | | | 10 |

(1) 26.0950.30 (2) 26.0950.70 (3) 26.0950.40 (4) 26.0950.50 (5) 26.0940.40
 (6) 26.0940.50 (7) 26.0940.70

P.A. SpA EQUIPAGGIAMENTI TECNICI DEL LAVAGGIO

Via Milano, 13 42048 Rubiera - (RE) ITALY
Tel +39 0522 623611 (ric aut) - Fax +39 0522 629600
Info@pa-etl.it - www.pa-etl.it

**COMPANY WITH
QUALITY SYSTEM
CERTIFIED BY DNV GL
= ISO 9001 =**